



UNIVERSAL
GALLERY
FOR SKIERS®
BY IDDERMAN

UNIVERSAL
COVER FOR ANY
CARPET LIFT
FOR SKIERS





INTRODUCTION

The relatively recent appearance of conveyor belts in the mountains as an alternative to traditional ski lifts for transporting skiers has represented a significant advance, both in volume of journeys and in ease of use.

However, the snowfall necessary for skiing, or its displacement caused by the wind, cause it to accumulate on the carpet which remains exposed to the weather. This creates a lot of work for the station staff who have to clean the carpet lift before it is put into daily use.

The *Universal Gallery For Skiers* concept offers an effective solution to cover any carpet lift in a safe and aesthetic way, protecting it from the weather along with the skier, during the journey.

Since the appearance of the galleries to cover the carpet lifts for skiers, it has been shown that the falls of the latter during their transport, have been considerably reduced while their satisfaction has increased.

The solutions presented in this catalog are the fruit of the experience acquired by Idderman since its creation in 2016.

Carlos Alarcón

Idderman General Manager



INDEX

ABOUT US	6
IDDERMAN, FROM DESIGN TO MANUFACTURE	6
OUR EXPERIENCE	8
THE UNIVERSAL GALLERY	10
ACCESSORIES	13
FRONT DOORS	13
EMERGENCY DOORS	14
RAILING	14
WINDOW	15
WOODEN SOCLE	15
COUNTERWEIGHT	15
SIDE SKIRTS	16
SIGNAGE	16
AESTHETIC OPTIONS	16
LIGHTING	17
SPECIAL PROJECTS	18



ABOUT US



Punching machine



Folding machine



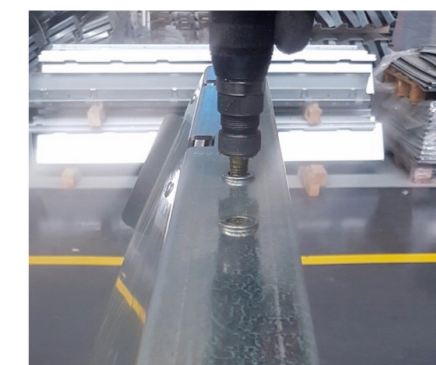
Miter saw



Tube bending



Welding



Assembly

We design our products thinking about the human and technical resources we have

IDDERMAN, FROM DESIGN TO MANUFACTURE

Knowledge of the materials and processes used in the manufacture of the Universal Gallery and its accessories, has made us specialize in materials such as **aluminum, galvanized steel** and **polycarbonate**, as well as in the technologies applied to **shear, folding, bending, assembly** and **welding**.

The **punching machine** and the **hydraulic shearing machine** give us the possibility of working with our three main materials; in **folding**, we make pieces of **up to 4 m** in length; Regarding the **bending of profiles, solids and sheets**, the design of the necessary tools for our machines allows us to reach figures with various radius and the shaping of complex geometries. After these years of experience, our staff is equally specialized in working with **riveting, screwing** and **adhesive** techniques. Finally, **aluminum TIG welding** allows us to make highly resistant joints with a spectacular finish.



LOAD TESTS

In order to comply with the obligations of Standard **EN15700: Safety for conveyor belts for winter sport or leisure use**, Idderman performs the necessary calculations and load tests to demonstrate the resistance of both the galleries and their accessories.

PACKAGING AND SHIPPING

The design of the pieces and the packaging allows us to optimize transport, being able to send, depending on the gallery model, **up to 100 linear meters in a 40' container**.

Product quality, safety of use and respect for the environment are our benchmarks in daily work.



*More than 150
carpet lifts covered,
in 18 countries*

OUR EXPERIENCE

Ski resorts around the world have chosen Idderman to protect their conveyor belts. Our Universal Gallery is present in 18 countries, having covered more than 150 conveyor belts since 2016.

FRANCE
SPAIN
ITALY
SWISS
AUSTRIA
GERMANY

ANDORRA
NORWAY
SWEDEN
FINLAND
RUSSIA
SLOVENIA

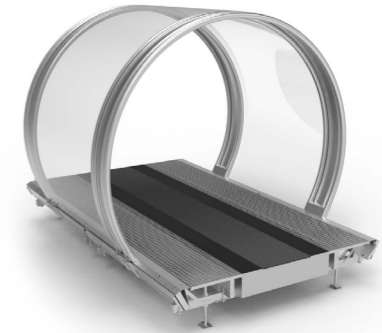
TURKEY
CANADA
JAPAN
SOUTH KOREA
NEW ZEALAND
USA



THE UNIVERSAL GALLERY



Our system allows to cover any carpet lift, without having to disassemble it, guaranteeing a complete independence between both



A MODULAR CONCEPT

The concept is based on the repetition of longitudinal modules designed to be able to place the transversal beams that connect the side plinths, as well as the polycarbonate load-bearing arches in different positions. This allows the beams to avoid possible interference with any element of the carpet and the arches to avoid the greatest adjustment to the orography of the terrain.

The adjustable feet of each module, the quantity of which depends on the gallery model, are responsible for guaranteeing its support on the ground and, thanks to its adjustment, the correct height alignment of two consecutive modules.

We have three gallery sizes:

STANDARD GALLERY

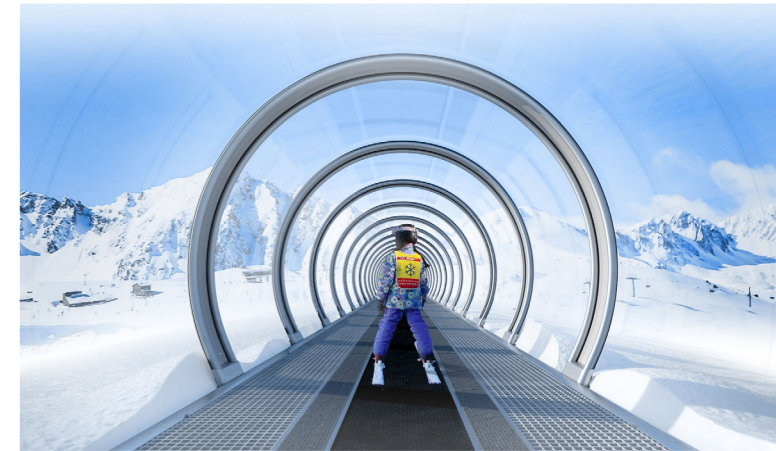
It is the smallest of them and allows us to cover, respecting the application standards in force in each country, carpet lifts up to 1,200 mm wide.

LARGE GALLERY

The intermediate one gives us the possibility of giving more width to the lateral sidewalks or decentering the strip and placing a pedestrian corridor, separated from it by a railing.

EXTRA LARGE GALLERY

It is the largest of them and complies with the coverage standards of two carpet lifts in parallel.





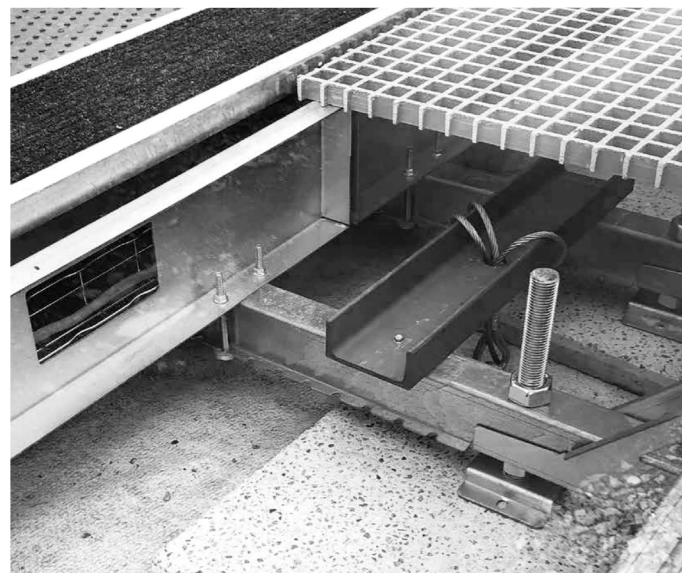
Modules of different sizes are composed of the same elements that change size

To cover the stations, the three sizes can be mixed, guaranteeing, as already indicated, the independence between the belt and the gallery.

The lower structure is in galvanized steel, the reinforcement tubes in anodized aluminium, the corrugated arches in lacquered aluminum and the transparent part in 5 mm thick polycarbonate with UV protection on both sides.



ACCESSORIES

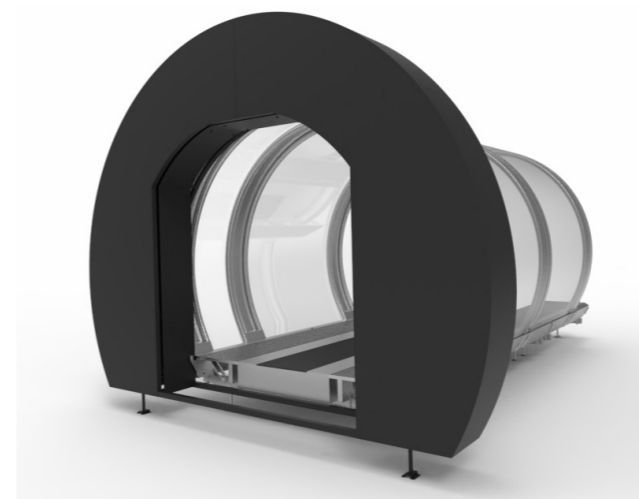


FRONT DOORS

For each size of gallery, we have the option of a hinged door with vertical axis in aluminum and polycarbonate, or a box for a metal shutter.

Both options can be customized with ski resort specific colors or decorations.

Each of the gallery sizes has its corresponding front door



EMERGENCY DOORS

Emergency doors, mandatory according to the regulations applicable in each country, can be of three types:

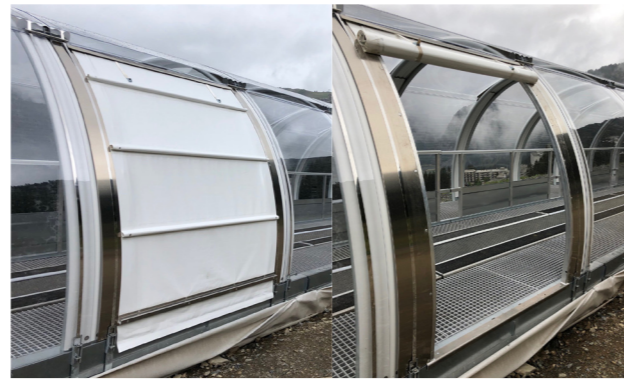
VERTICAL AXIS SWING



HORIZONTAL AXIS SWING (BUTTERFLY)



CANVAS DOOR



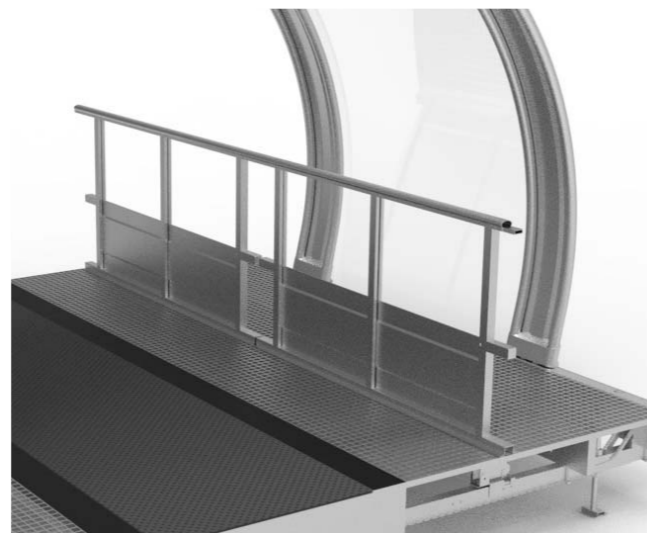
The opening and closing mechanisms, present in the two hinged models, allow the emergency doors to remain closed during the daily use of the gallery. However, regarding canvas doors, they must be opened before the daily operation of the carpet lift.

The two hinged doors have a passable window to favor the ventilation of the gallery. The movement and position of the glass relative to the door is independent of the proper functioning of the door for use in an emergency.

As an option, you can color the hinged doors as well as the fabric.

RAILING

We propose a railing made of aluminum and galvanized steel sheet with composite handrails. Possibility of emergency doors in it, allowing evacuation through it to access the emergency doors of the gallery.



WINDOW

We offer the possibility of a circular window, with a semicircular swing leaf with a horizontal axis, made of aluminum and polycarbonate. Optional colour.



WOODEN SOCLE

To avoid seeing the snow accumulated on the sides from inside the gallery, there is the option of placing a plinth in treated pine wood.



COUNTERWEIGHT

The existing options to guarantee the support of the gallery to the ground in extreme wind conditions are:

GROUND ANCHORS

Uses ground anchors which are fixed to the gallery using steel cables or threaded rods. The determining factor

for this type of fixing is the need to carry out preliminary studies of the ground to determine its resistance and, based on this, set the length (depth) of the anchoring.

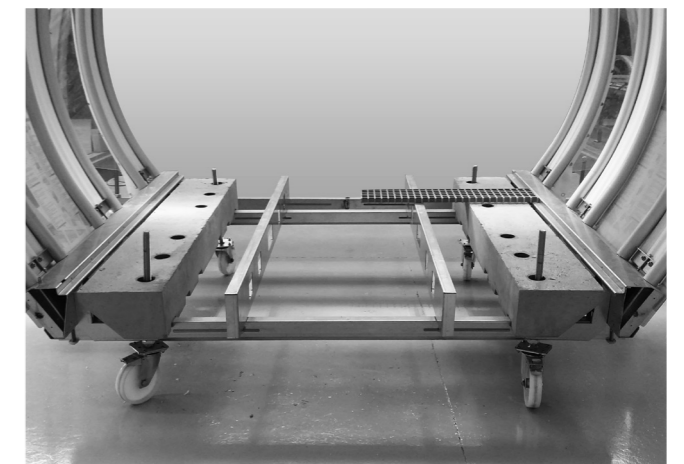
CONCRETE SLEEPERS

It's about positioning the gallery on concrete sleepers. In this case, the feet of the gallery will rest on the sleepers and must be screwed to them so that the concrete brings the weight necessary for the assembly and thus prevents the action of the wind.



CONCRETE BALLASTS

A specific solution for the Universal Gallery is the use of concrete ballasts designed by Idderman specifically for it, which will be supported on its cross beams. The legs of the gallery will rest on concrete plates that guarantee a stable support on the ground and, once the height of the gallery has been adequately regulated, the directly supported concrete ballasts will be placed, without the need to fix them in any way, providing to the gallery of adequate weight to resist the force of the wind.



SIDE SKIRTS

Depending on how high the lower structure of the gallery is from the ground, it may be necessary to cover this gap to prevent a skier from accidentally entering under the installation. The Universal Gallery has a specific solution in galvanized sheet steel which covers these gaps.

As an option, a color can be given to these panels.



SIGNAGE

As a complement to the gallery, in order to fulfill the standards of application, guaranteeing information to the skier, there is a range of aluminum supports of different sizes and locations, as well as the corresponding pictograms.



AESTHETIC OPTIONS

In the same way that the Universal Gallery offers the possibility of coloring its doors, windows and side skirts, it is possible to choose a color from the RAL color chart for the arches, as well as a certain range of colors, degrees of transparency and solar protection for the polycarbonates, in order to give them an original aesthetic and to reduce the action of the sun in summer, when some ski resorts continue to use the gallery for attractions such as tubing.

LIGHTING

To offer the Universal Gallery the possibility of operating at night or simply using its geometry for spectacular lighting, there is the option of installing RGB LED spotlights and different levels of controllers. These will allow ski resorts to choose between the different pre-established lighting programs or to perform original programming.

SPECIAL PROJECTS



Idderman develops, on request, special solutions based on the Universal Gallery, such as a **Start House** for the start of professional skiers, a **checkpoint** for cross-country ski trails, the **covering** of a corridor or a access staircase to the station, or the integration of the **gallery staff** in the gallery itself.

Original decorations of elements such as **entrances** are also among the available options.





IDDERMAN®

San Andres Kalea, 10
01170 Legutio, Araba
Spain

+34 945 032 028
mail@idderman.com

universalgalleryforskiers.com
idderman.com

